

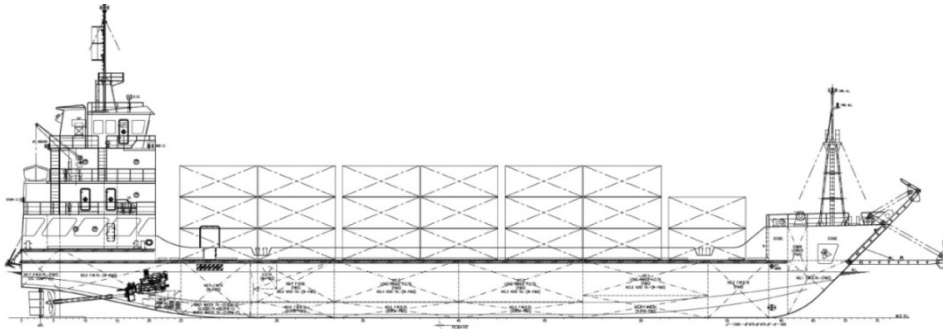


# BERJAYA DOCKYARD (SIBU) SDN BHD

Plot 9 of Lot 657, Block 12, Buan Land District & Part of Stateland Block 10, Buan Land District, Shipbuilding Industrial Zone at Bandar Baru Tanjung Manis, 96150 Belawai, Sarawak, Malaysia |

P O Box 983, 96007 Sibul, Sarawak, Malaysia

TEL: +6084-813400, +6084-813402 | FAX: +6084-813401 | admin@berjayedockyard.com



## SBJ501 | 68.00M LANDING CRAFT

### PRINCIPAL PARTICULARS

Built	: 2015
IMO Number	: 9773454
Length Waterline	: 68.00m
Breadth	: 15.00m
Depth/Draft	: 4.50m/3.594m
Accommodation	: 14 Men
Classification	: Bureau Veritas

### CARGO CAPACITY

Fuel Oil Capacity	: 218.00m <sup>3</sup>
Fresh Water	: 188.00m <sup>3</sup>
Long Range Fuel Oil	: 986.00m <sup>3</sup>
Fresh Water Ballast	: 314.00m <sup>3</sup>
Deck Strength	: 15 tons per sqm
Ramp Door Size	: 8.0m x 8.3m (L x W)
Deadweight	: Approx. 1700 tons

### DECK EQUIPMENTS

Anchor & Chain	: 2 x stockless anchor 1740kg 16 x Ø36mm Grade 2 steel chain cables stud link chain
Stern Anchor	: 1 x stockless anchor 1740kg 5 x Ø36mm SWR
Rescue Boat & Davit Crane	: Davit model: HMD21 4.5m length x 1.85m F.R.P. rescue boat capable of carrying 6 persons c/w 40hp Mercury model outboard engine, SWL 2.1T

### MACHINERY/PROPULSION

Main Engine	: 2 x C32 ACERT 1200hp @ 1800rpm
Main Generator	: 2 x BF6M1013MC 130ekW Leroy somer LSAM46.2M3 alternator @ 1500rpm
Propeller	: 2 x 4 blades manganese bronze, open type
Steering Gear	: PEH3002-1P electro-hydraulic, 2 x 3.0T-M tie bar steering gear system at 35° steering angle with one unit dual pumps electro HPU
Bow Thruster	: 1 x TFN-300 5.0T @ 1200rpm, engine driven
Gear Box	: 2 x Reintjes WAF 562 L Ratio 5.05:1

### NAVIGATION/COMMUNICATION EQUIPMENTS

GMDSS Unit	: 1 x OE-2014 (A1+2+3 sea areas)
Inmarsat-C	: 1 x Felcom-18
VHF	: 1 x STR-6000A
Gyro Compass	: 1 x Standard 22 compact
Navtex Receiver	: 1 x SNX-300
Echo Sounder	: 1 x F-2000
AIS	: 1 x SI-30A
GPS	: 1 x GP-170
Radar	: 1 x FAR-2117D; 96NM 1 x 1935; 48NM
Speed Log	: 1 x DS-80
EPIRB	: 1 x SEP-500

Particulars given herein are without warranty as to accuracy and interested parties must satisfy themselves by inspection or other means of detail of the vessel.

